

8/17/99

PROJECT REFERENCE NO.	SHEET NO.
HICKORY TREE RD	7
UTILITY SHEET NO.	3 OF 3
DISTRICT ENGINEER	HYDRAULICS ENGINEER

SEAL
19659
8/4/2015
ENGINEER
WRIGHT R. ARCHER
Wright R. Archer

DRAINAGE STRUCTURES

Structures	Grate Types	Total Amount (Approx.)
CB's	G	5
DI's	NARROW	7

PIPES

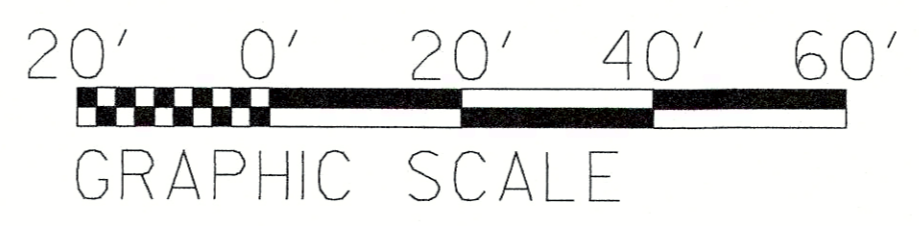
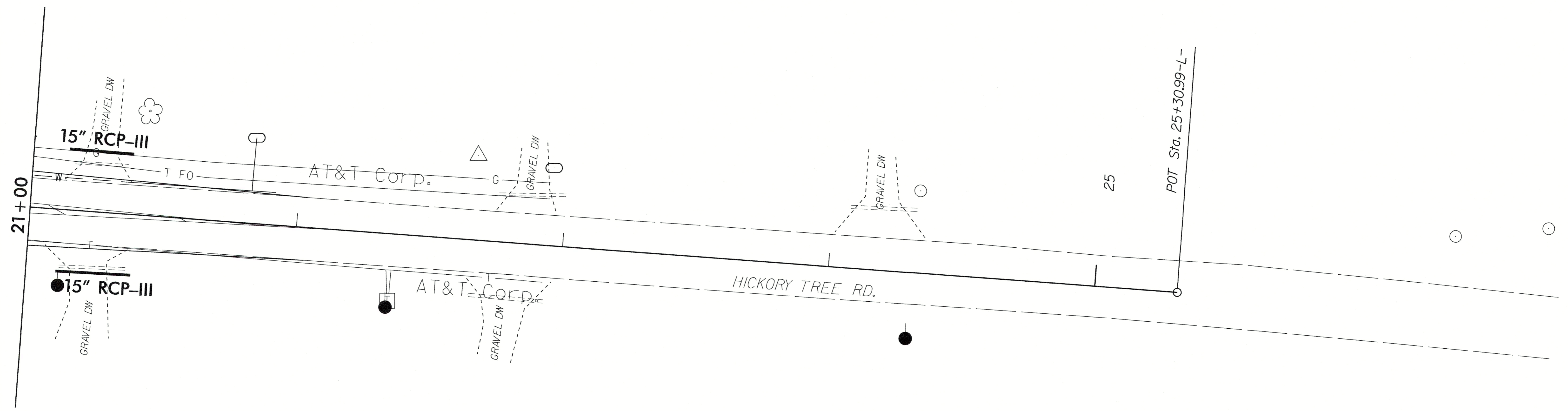
Types	Total Length (Approx.)
15" RCP	513' +/-
15" HDPE	161' +/-
18" RCP	79' +/-
18" HDPE	168' +/-

PIPE TABLE DATA

From	To	Type	Length +/-	% Slope
DI 7	CB 5	15" HDPE	111'	F/D
DI 6	CB 5	15" HDPE	25'	F/D
CB 5	CB 4	15" RCP	101'	2.5 %
DI 5	CB 4	15" HDPE	18'	F/D
CB 4	CB 3	15" RCP	155'	3.0 %
CB 3	CB 2	15" RCP	75'	3.3 %
DI 4	CB 2	15" HDPE	6'	F/D
CB 2	CB 1	15" RCP	94'	2.9 %
CB 1	DI 3	15" RCP	12'	F/D
DI 3	DI 2	18" RCP	79'	F/D
DI 2	DI 1	18" HDPE	86'	F/D
DI 1	DITCH	18" HDPE	82'	F/D

REVISIONS

04-AUG-2015 08:53
C:\CURRENT\HICKORY TREE RD
MENDENHALL ROAD\DCNS\HICKORYTREE_PSH3.dwg
DWG:DCNS



DATE	REVISIONS
11/18/14	DRAINAGE & ROW
1/13/15	ROW
2/06/15	ROW
2/13/15	PROP. ROW TO EX. ROW

Prepared In the Office of:
DEPARTMENT OF TRANSPORTATION
375 SILAS CREEK PKWY, WINSTON SALEM, NC 27127

2006 STANDARD SPECIFICATIONS

PROJECT NAME	HICKORY TREE @ MENDENHALL	APP. BY DIST. ENG.	DATE
W.O. NUMBER	NA	APP. BY DIV. TRAFFIC ENG.	DATE
SR # / ROAD NAME	SR 1508 HICKORY TREE ROAD	REVISION	NTSII
DATE DRAWN	4/23/12	CHECKED BY	CWG
COUNTY	DAVIDSON	DRAWN BY	